

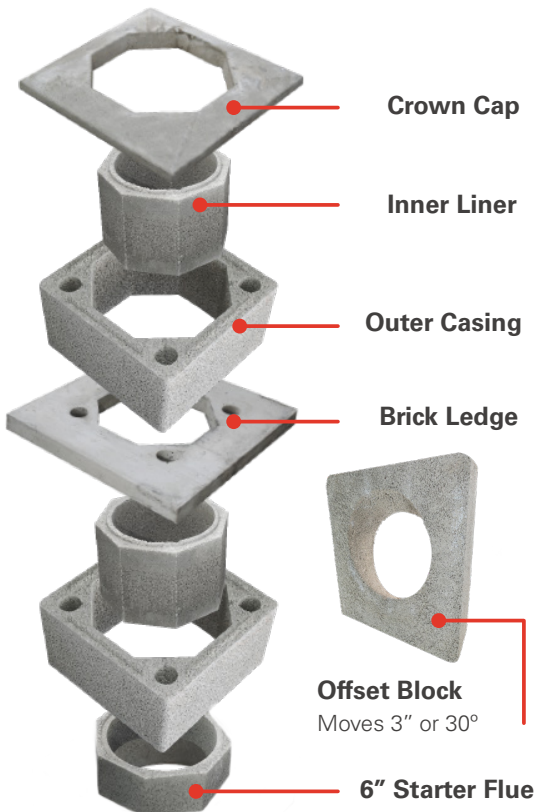


ISO KERN Chimney

DM54

Dual Module Masonry
Chimney Section.

Shown here is Offset Blocks



The **DM54 Chimney System** is a zero clearance system made with our Icelandic pumice, a natural insulator, separating our system from all other chimneys.

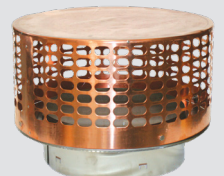
The insulating properties of pumice allow the flue gases in the chimney to quickly reach their optimum temperature, enabling the heating appliance to perform efficiently. It also keeps the chimney warmer longer as the heat output of the fireplace decreases. This not only aids performance, but reduces the likelihood of condensation and soot build-up.

Our component based system is made up of inner and outer blocks that are installed with staggered joints for safety and stability. The double layer of pumice blocks, separated by an air gap, maximizes the chimney performance. This system is the only masonry chimney system tested and listed to UL 103HT (2100° High Temperature) standards.

Iso-Caps

Specifically designed by Earthcore for the Isokern DM54 flue liner, the IsoCap has minimal installation. Sealed with silicone caulk, each Iso-Cap simply slides into or over the inner flue liner of the DM54 chimney.

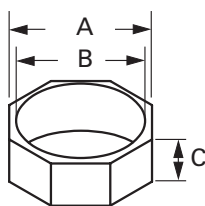
AVAILABLE WITH TOP SEAL DAMPER



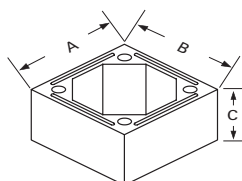
Specifications

DM54 Chimney System

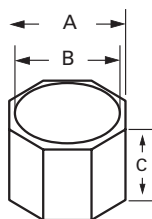
Parts	A	B	C
Starter Block	16 1/2"	13 1/2"	6"



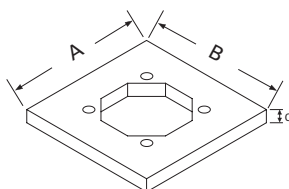
Parts	A	B	C
Outer Casting	21 1/2"	21 1/2"	12"



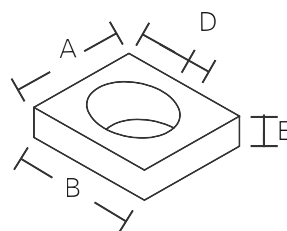
Parts	A	B	C
Inner Flue	16 1/2"	13 1/2"	12"



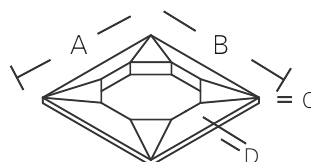
Parts	A	B	C
Brickledge	31 1/2"	31 1/2"	3"



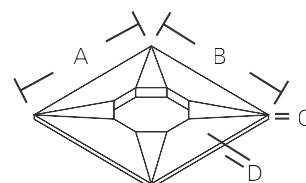
Parts	A	B	C	D	E
Offset Block	21 1/2"	25"	11"	3"	6"



Parts	A	B	C	D
Small Crown Cap	26 1/4"	26 1/4"	1 1/4"	3"



Parts	A	B	C	D
Large Crown Cap	37 1/2"	37 1/2"	1 1/4"	3"



Please Note: The DM54 Chimney system is zero clearance to combustible materials. Offset Blocks offer the ability to move a vertical chimney from side to side, allowing it to pass objects above the firebox. Offset blocks require 1 1/2" clearance to combustible material. "Combustibles" are defined as "normal construction materials" and are considered to be: wood framing materials, particle board, mill board, plywood sub-flooring, plywood paneling and wood flooring.